



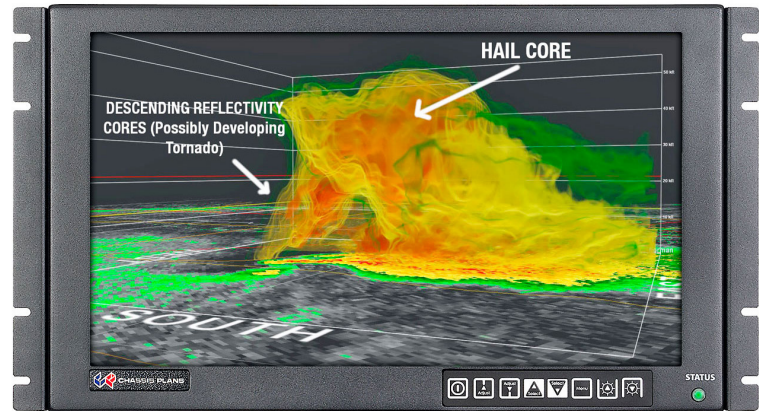
# CPX

## 6RU WIDE SCREEN LCD MONITOR

## RUGGED DISPLAY

The CPX1-173 provides a high performance, rack mount 6U TFT Wide Screen LCD display with 1920 x 1080 resolution. Offered is a standard brightness or daylight viewable hibright LCD. Various LCD enhancements such as an oleophobic antireflective and/or ITO EMI bonded overlay and a RhinoTouch touch screen can be specified.

Electrical components are selected for their inherent ruggedness and revision control, and there is locking stainless hardware throughout.



CP North America's 2U-5U rackmount computer systems are designed with a removable back plate that allows a 12V power cord to run from the computer's power supply to a display or keyboard video monitor. This optional feature, the Exterior Power Jack, is available for this monitor. By running the display with the computer systems' power supply, this Exterior Power Jack option can provide many benefits:

- Reduction in the number of required cables
- Elimination of additional equipment, i.e., a power brick
- Reduction in total system weight and cost

To enjoy these benefits, power up your new display with a CP North America' server.

## CHASSIS SPECIFICATIONS

<b>DIMENSIONS</b>	19" X 10.47" X 3.2" (482.6mm X 265.9mm X 81.3mm)
<b>SHIPPING WEIGHT</b>	9.7lbs (4.39985kg)
<b>CONSTRUCTION</b>	High-strength 5052-H32 aircraft-grade aluminum
<b>POWDERCOATING</b>	Black per MIL-PRF-24712, Type IV, Class 3, Cardinal C214-BK110 polyester semi-gloss, fine texture
<b>PLATING</b>	Chem-Film per MIL-C-5541F, Class 1A
<b>MOUNTING OPTIONS</b>	Rack mounting, panel mounting, VESA 100

## Who We Are

CP North America designs, fabricates, and integrates standard and customized high-performance computing platforms and LCD monitors for military, industrial, and commercial applications.

Using COTS components, CP North America provides solutions for customers who need reliable systems that will operate in a variety of harsh conditions and who require revision control and hardware consistency for multi-year programs.

CP North America is an ITAR Registered and ISO 9001:2015 Certified business that has been operating for over twenty years.

**Assembled in the USA**  
**ISO 9001:2015 Certified**  
**ITAR Registered**

**CP North America**  
2620 Deep Well Ranch Rd  
Prescott, AZ 86301  
cpna.tech  
928.239.9500



# TECH SPECS

<b>SCREEN DIAGONAL</b>	17.3"
<b>CONTRAST RATIO</b>	600:1
<b>VIEWING ANGLE</b>	80° (L/R/U/D)
<b>RESPONSE TIME</b>	40ms
<b>NATIVE RESOLUTION</b>	1920 x 1080
<b>BRIGHTNESS</b>	400 cd/m2 (1000 cd/m2 with Hi-Bright)
<b>BACKLIGHT</b>	LED
<b>COLORS</b>	16.7M
<b>POWER INPUT</b>	Universal AC Adapter 28/12V or 48/12V DC-DC Converter 12V CP Workstation Link
<b>POWER DISSIPATION</b>	42 Watts (49 Watts with Hi-Bright)
<b>EXTERIOR POWER JACK</b>	Yes (optional)
<b>INPUTS</b>	DVI-I HDMI DisplayPort
<b>OPTIONS</b>	Vandal Shield Bonded Glass Resistive Touchscreen EMI Shielding Hi-Bright Display

## HARSH ENVIRONMENTS

CP North America designs, builds, and tests our ruggedized offerings to meet MIL-STD-810, 461, and 901. This includes environmental factors such as:

- **HIGH ALTITUDE**
- **EXTREME HIGH & LOW TEMPERATURES**
- **EMI**
- **HUMIDITY**
- **BLOWING SAND AND DUST**
- **VIBRATION**
- **SHOCK**

## QUESTIONS?

Reach out to us at  
cpna.tech  
or call 928.239.9500

## ENGINEERED TO YOUR SPECIFICATIONS

- In-house engineering department
- Design and build of rapid prototypes. Experience with solving difficult customer application problems through knowledge of the industry and custom system design and manufacturing capability
- Our Engineers use Solid Works 3D CAD modeling software for mechanical design and thermal simulation
- Design experience with MIL-STD-167, MIL-STD-461, MIL-STD-810, and MIL-S-901, in addition to FCC, UL, CE, and country specific agency requirements

## REVISION CONTROL & CONFIGURATION MANAGEMENT

- Our Program Managers will assure your products are revision controlled for the life of the program
- Configuration Management to assure TAA Compliance and system compatibility
- One part number for life of the program
- Counterfeit and obsolescence management

## FACILITY AND TEST

- All integration work is performed in a state-of-the-art, ESD-controlled facility
- Our facility has 50,000 sqft and has dedicated areas for manufacturing and engineering
- Operate to anti-static standard ANSI/ESD S20.20-2007 and electronics assembly standard IPC-A-610, Revision E-2010

## QUALITY COUNTS

- ISO 9001:2015 Certified
- 100% system inspection before shipment
- All integrated systems undergo a rigorous system test and burn-in before shipment to the customer
- 5-year warranty on all servers and 3-year warranty on LCD monitor products
- TAA compliant
- Built in the USA

**CP North America**  
2620 Deep Well Ranch Rd  
Prescott, AZ 86301